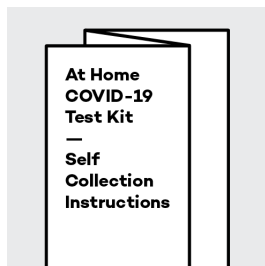


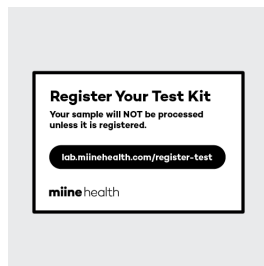
COVID-19 At Home Test Kit

Test kit is dispatched and returned to lab via FedEx.

Your kit includes:



Specimen Collection Instructions



Registration Instructions



miinehealth Box



Saliva Specimen Collection Device



Biohazard Bag for Collected Specimen



Alcohol Prep Pad



FedEx Overnight Return Pack UN 3373 with Prepaid Return Label

Intended Use: To collect saliva samples for the purpose of diagnostic testing in IBX laboratory. Rx only.

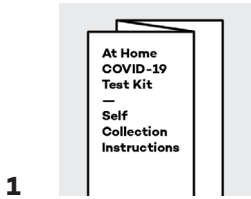
This home collection kit has not been FDA cleared or approved.

This home collection kit has been authorized by FDA under an EUA.

This home collection kit has been authorized only for the home collection and maintenance of saliva specimens as an aid in detection of nucleic acid from SARS-CoV-2, not for any other viruses or pathogens.

This home collection kit in combination with the authorized test is only authorized for the duration of the declaration that circumstances exist justifying the authorization of emergency use of diagnostic tests for detection and or diagnosis of COVID-19 under Section 564(b)(1) of the Act, 21 U.S.C. § 360bbb-3(b)(1), unless the authorization is terminated or revoked sooner.

Self Collection Instructions



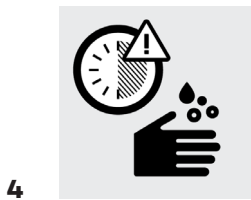
1 Please read all of the instructions before beginning collection.



2 When you are ready to collect your specimen, register your test serial number online at lab.miinehealth.com/register-test. Type in the 12-digit code located on your collection tube, miinehealth box and registration card.



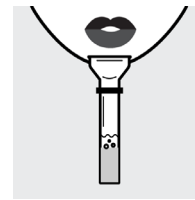
3 Visit <http://bit.ly/fedexdropbox> to view FedEx drop box locations and pickup schedules. It is important to bring your specimen to a drop box on the same day you collect it, before the last Express pickup. You may also schedule an at home same-day pickup by FedEx.



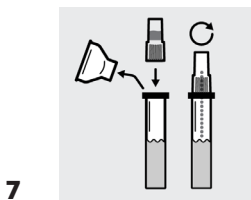
4 Do not eat, drink, smoke or chew gum within 30 minutes of collection. Wash and dry hands before opening kit.



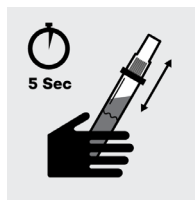
5 Open your kit and place all components on a clean, dry surface. Do not touch the inside of the funnel with your hands.



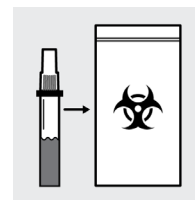
6 Spit into the funnel until your saliva (not including bubbles) is at or just above the black wavy line on the tube (2 ml). DO NOT OVERFILL.



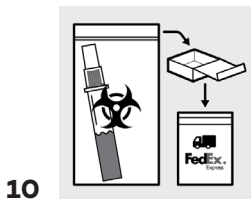
7 Remove the funnel from the tube. Screw on the enclosed cap TIGHTLY to release the blue solution that will stabilize the DNA in your saliva. Firmly tighten cap to assure the cap and tube are completely sealed.



8 Shake the tube for at least five seconds. This will ensure your sample mixes thoroughly with the stabilizing solution.



9 Wash hands thoroughly again. Place specimen in the provided biohazard bag. Seal the biohazard bag by closing the zip lock seal. Wipe the bag with the provided alcohol wipe.



10 Place the biohazard bag into the miinehealth box. Place miinehealth box in the FedEx shipping bag with prepaid return label. Remove the adhesive strip and seal the package closed. Wipe the package with the provided alcohol wipe.

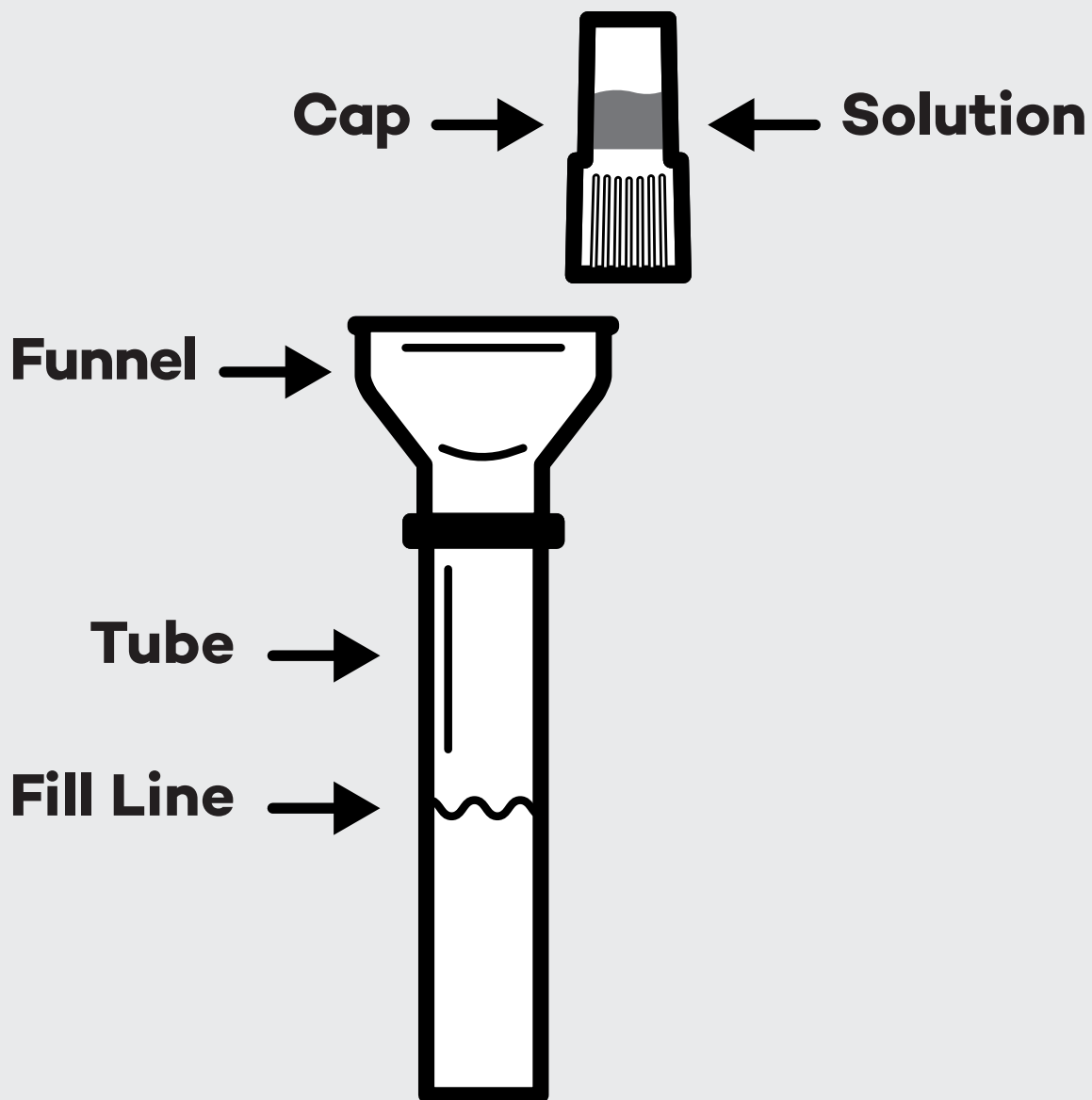


11 Immediately deliver package to the closest FedEx Express drop box or have a scheduled pickup. Ship the specimen on the same day as collection, before the last Express pickup.



12 Lab inspects package and logs serial number upon receipt of package. Results are identified by kit serial number. Test results are digitally delivered to miinehealth.

Specimen Collection Device



Cap choking hazard. Keep out of reach of children. Wash with water if liquid solution comes in contact with eyes or skin. DO NOT INGEST LIQUID.